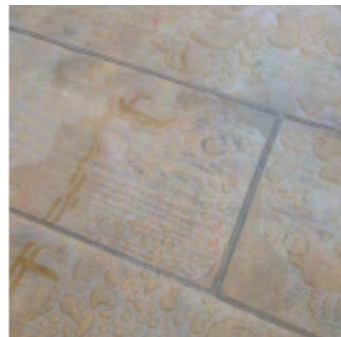


Chelfix Glass

Polyurethane Based, Transparent, Two Component, UV Resistant Waterproofing Material



Product Description

Polyurethane Based, two component, high UV and adhesion strength, Waterproofing material.

Areas of Usage

- Waterproofing of balconies and terraces,
- Waterproofing of glass and metal mesh reinforced glass,
- Waterproofing of glass brick walls,
- Waterproofing and preservation of natural stones,
- Water insulation and protection of wood,
- Waterproofing of metal surfaces,
- Especially in places where UV resistance is required in outdoor areas.

Features and Benefits

- Epoxy and Polyurethane surfaces provide excellent adhesion to all surfaces such as concrete, asphalt, steel.
- Its application is very easy. (can be applied by brush, roller or spray)
- UV resistance and thermal resistance.
- It has abrasion, impact and chemical resistance.
- It can be applied safely on horizontal and vertical surfaces

Application Instructions

Surface Quality: The surface of the application should be free from all kinds of dust, dirt, weak and volatile particles, cement grout residues, oil and grime and dry. Concrete bottom surface should be clean, strong and have sufficient compressive strength (at least 25 N/mm²), pull-off should be at least 1.5 N/mm².

Surface Preparation: The application surface should be cleaned using appropriate methods to ensure maximum adhesion.

Application Notes / Restrictions

- Do not use under the minimum allowable temperature to complete the hardening of the material.
- Low temperatures will slow the hardening, while higher temperatures will accelerate the hardening. Backboard the lifetime will also vary depending on the temperatures.
- The product may irritate the skin. Protective gloves or goggles should be used. Hand washing cream can be applied before starting work. In case of grout contact with eyes, eyes should be washed immediately with warm water and consult a doctor.
- If it remains below 0°C for a long time, crystallization can be observed. If the crystals are dissolved by bringing the product back to room temperature, it can be used without any problems.
- After component B has been added to component A, stir for 2-3 minutes until a homogeneous color is obtained with a low speed, electric stirrer (up to 400 rpm).
- CHELFIX GLASS; Make sure you cover a continuous, pore-free surface. Application Brus can be in the form of a roll or spray
- The hands should be washed with warm water and soap. Skin contact may be irritating. Be careful. Eye contact should be avoided. If not, consult a doctor.
- All equipment used, immediately after application, not yet hardened; It should be cleaned with Tekno Thinner. The cured product can only be mechanically cleaned.

Technical Data

General Information	
Chemical Structure	Polyurethane
Color	Transparent
Package	5 kg set
Density	0.97 ± 0.03 (g/ml) (EN ISO 2811-1)
Application Information	
Drying Time	Opening to Pedestrian Trail 3 days, Full Curing 7 days
Pot Life	40 - 45 min
Cleaning Time	45 min
Applicable Surface Temperature	(+5°C) - (+ 30°C)
Consumption	100-150 gr/m ²
Thinner	Polyurethane Paint Thinner

