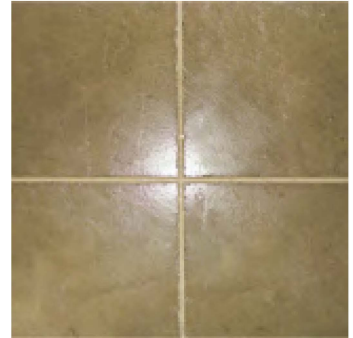


Chelfix EP 7000

Chemical Resistant Epoxy Based Joint Filler and Tile Adhesive



Public Pos. No: 04.380/013

Product Description Epoxy resin based, two component, chemically and bacteriologically resistant, easy to apply and epoxy grouting that can be cleaned with water.

- Areas of Usage**
- In joints of floor and wall coverings,
 - In laboratories, hospitals and supermarkets,
 - Slaughterhouse, dairy, ready-made meals and food industry structures,
 - Thermal swimming pools, mineral water / salt tanks, zoos, industrial chemical plants,
 - In olive oil, sunflower etc., in vegetable oil deposits.
 - It is resistant to various chemicals, abrasive waters, organic salts and acids,

- Features and Benefits**
- Easy to be processed.
 - High mechanical and chemical resistance.
 - It is resistant to various chemicals, acids, alkalis and oils.
 - Has antibacterial properties and does not form mold, fungus and bacteria.
 - Wear resistance is high.
 - Applied Chelfix AD 7000 is dirt-resistant and easy to be cleaned afterwards.
 - It is suitable for joint widths from 2 mm to 10 mm.
 - It is resistant to short-term sudden temperature changes.
 - It is resistant to freeze-thaw cycles.
 - During the application, the resin that permeates to the ceramic surface can be cleaned with water.

Application Instructions

Surface Quality: Joints and joint surfaces must be free from grease, grime, and dirt from all kinds of dust, dirt, weak and volatile particles, grout residues.

Surface Preparation: Joints and joint surfaces should be cleaned using appropriate methods to ensure maximum adhesion strength, and be sure to use the applied tile adhesive.

It is bonded on the masking tape coating to prevent adhesion of the Chelfix AD 7000 to the floor covering and to prevent the adhesion of the floor beforehand to save money and time for cleaning later. After application is finished, the tape is removed.

Mixing: After component B has been added to component A, stir for 2-3 minutes until a homogeneous color with a low speed, electric stirrer (up to 400 rpm) is obtained.

- Application Notes / Restrictions**
- Chelfix AD 7000 can be applied with mortar gun. Spray the prepared mortar, then fill in a suitable nozzle and fill in the joints.
 - Clean the overflowing material with warm water and a sponge. Pressing and washing must be avoided in cleaning performed by rubbing.
 - Immediately after the application, not yet hardened, equipment should be washed with warm water, hands should be washed with clean warm water and soap. The hardened mortar can only be mechanically cleaned.
 - In order to complete the hardening of the material, do not use below the minimum allowable temperature. Low temperatures will slow the hardening, while higher temperatures will accelerate the hardening. The pot life will also vary depending on the temperatures.

- The product may irritate the skin contact. Protective gloves, masks and goggles should be used. Hand protection cream may be applied before starting work. In case of grout contact with eyes, eyes should be washed immediately with warm water and consult a doctor.
- If it remains below 0°C for a long time, crystallization can be observed. If the crystals are dissolved by bringing the product back to room temperature, it can be used without any problems.
- Before applying Chelfix AD 7000 between ceramics, the adhesive must be cured.
- Color discrepancies in the cured product due to direct sunlight (UV) may cause yellowing.

Technical Data

General Information	
Chemical Structure	Epoxy based
Appearance	A and B components are in different colors
Shelf Life	12 months in unopened package in dry environment
Package	5,20 kg set
Consumption	For bonding purposes 3 - 4 kg/m ² See grouting table for grouting
Application Information	
Application Temperature	(+10 °C) - (+27 °C)
Pot Life	2 hours at 25°C
Opening Time for Traffic	1 day
Performance Information	
Flexural Strength (EN 12808-3)	≥ 30 N/mm ²
Compressive Strength (EN 12808-3)	≥ 45 N/mm ²
Wear Resistance (EN 12808-2)	≤ 250 mm ³
Shrinkage (EN 12808-4)	≤ 1.5 mm/m
Water Absorption After 240 min (EN 12808-5)	≤ 0,1
Temperature Resistance	-20°C / +80°C

Coverage

For Fixing

1.70 kg/m² for a thickness of 1 mm in the adhesion of ceramic

Tile Dimensions (mm)	Consumption Table, joint Depth: 8 mm			
	Joint Width			
	2mm (kg/m ²)	4 mm (kg/m ²)	6 mm (kg/m ²)	10 mm (kg/m ²)
10 x 10	0.60	1.20	1.80	3.00
10 x 20	0.50	0.95	1.40	2.30
15 x 15	0.40	0.80	1.15	1.90
15 x 20	0.35	0.70	1.10	1.80
20 x 20	0.35	0.65	1.00	1.65
20 x 25	0.30	0.60	0.90	1.50
20 x 30	0.30	0.55	0.85	1.40
30 x 30	0.25	0.45	0.65	1.10

Chemical Resistance Table

Chemical name	Concentration	Resistance
Lactic acid	2,5 %	+
Asetic acid	3 %	+
Tartaric acid	10 %	+
Sitric acid	10 %	+
Phosforic acid	50 %	(+)
Hydrochloric acid	0,05 %	(+)
Nitric acid	50 %	-
Sulfuric acid	96 %	-
Oxalic acid	10 %	+
Descaler	100 %	+
Bleach	100 %	+
Sodium hydroxide	50 %	+
Sodium hypochloride	5 %	(+)
Sodium chloride	36 %	+
Potasyum hidroxide	50 %	+
Potasyum permanganate	5 %	(+)
Sodium bisulfate	10 %	+
Hidrogen peroxide	10 %	+
Aluminium sulfat	saturated	(+)
Sodium thiosulfate	saturated	+
Ferric chloride	10 %	(+)
Acetone	99,5 %	-
Ethanol	96 %	-
Methanol	96 %	-
Ammonia	96 %	+
Glycerol	-	+
Carbon teerachloride	-	-
Ethylene glycol	-	+
Toluen	-	-

+	Resistant to mentioned chemicals
(+)	Resistant to chemicals in short-term contact. In contact with these chemicals, they should be cleaned as soon as possible
-	Not Resistance